

Gebrauchsanleitung

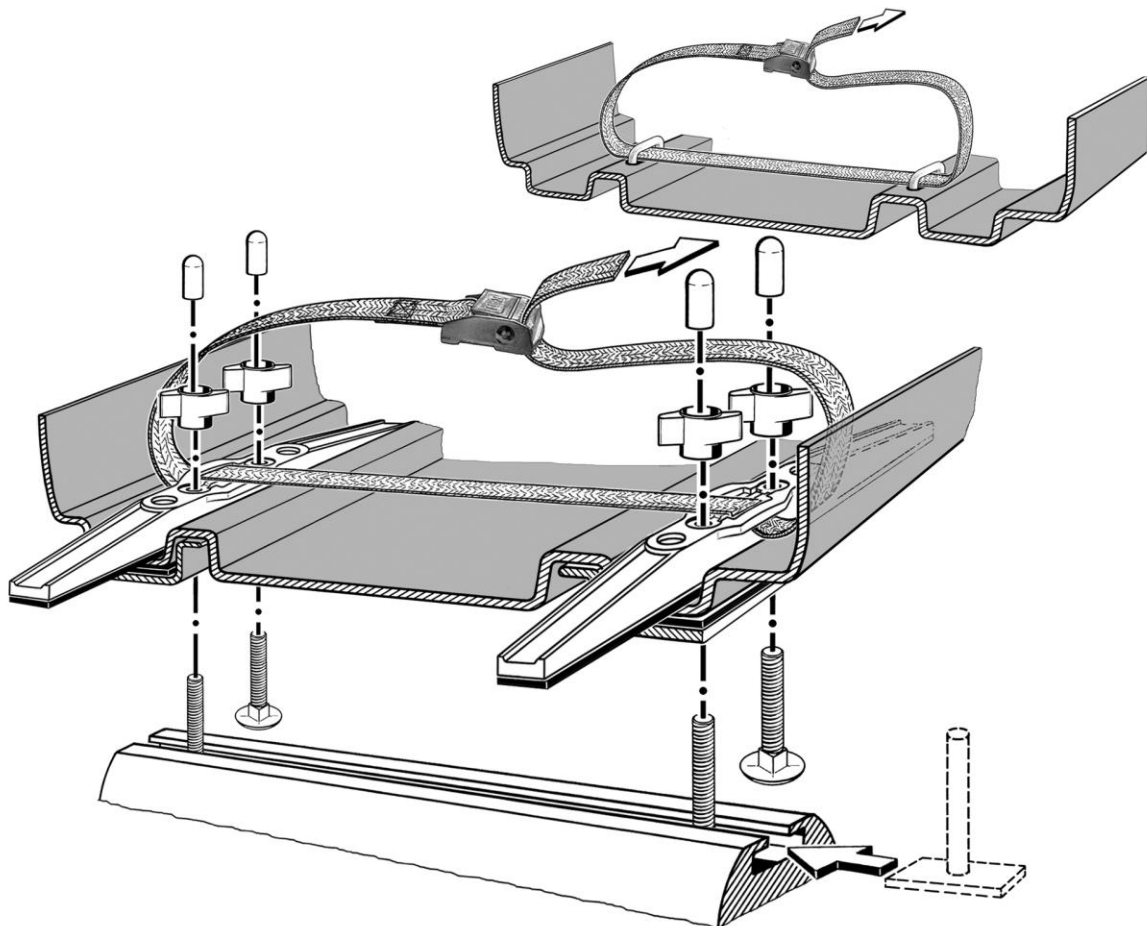
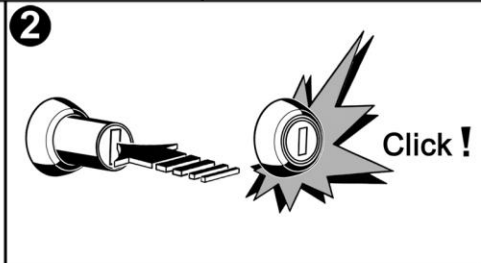
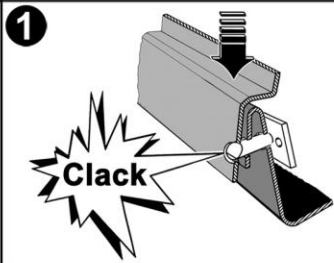
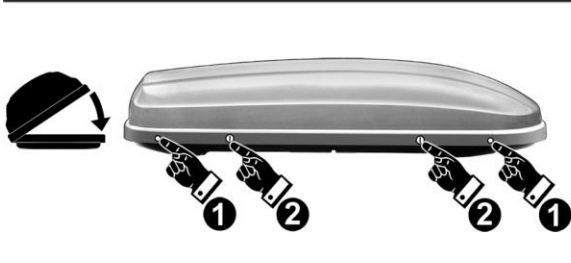
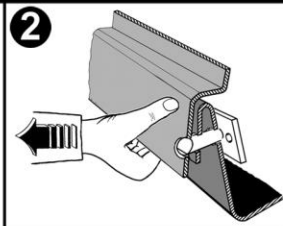
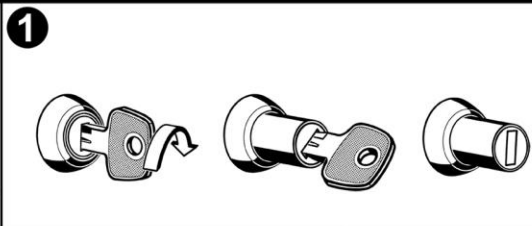
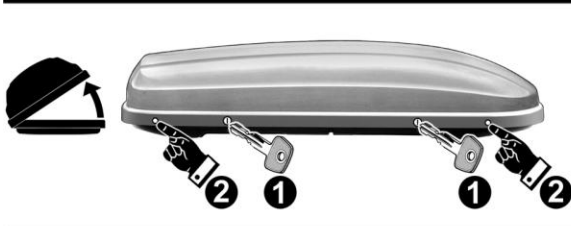
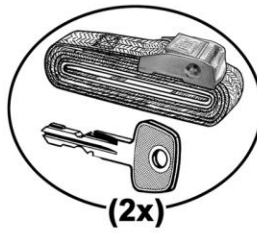
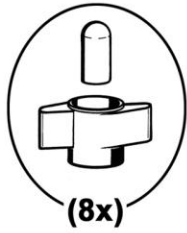
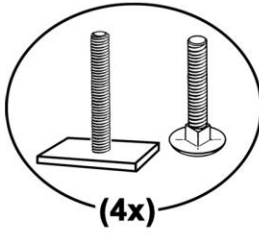
Komfort-Schiebe-Befestigung
mit Druckschloß

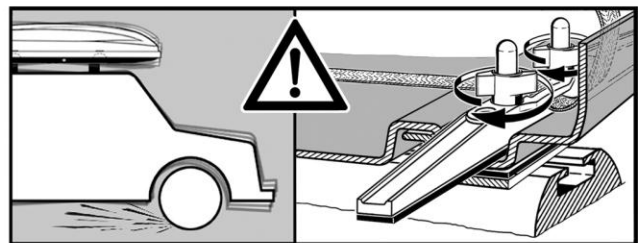
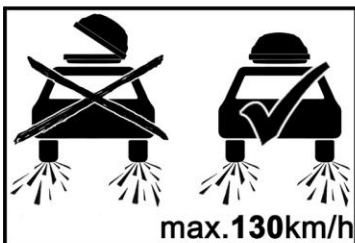
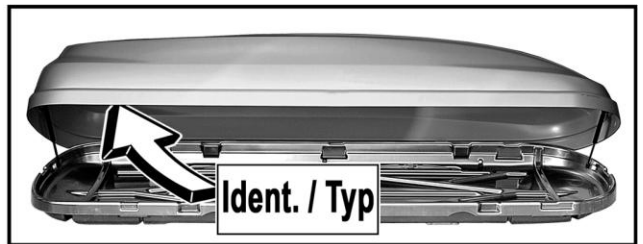
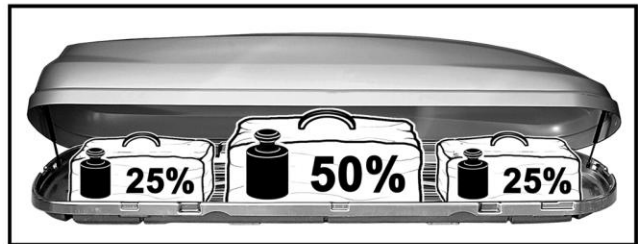
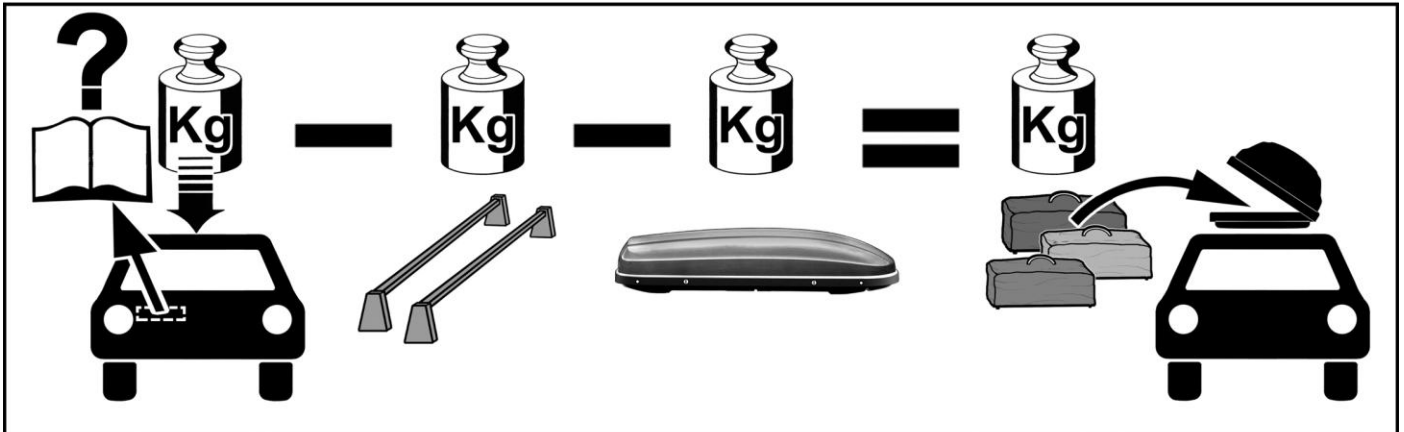
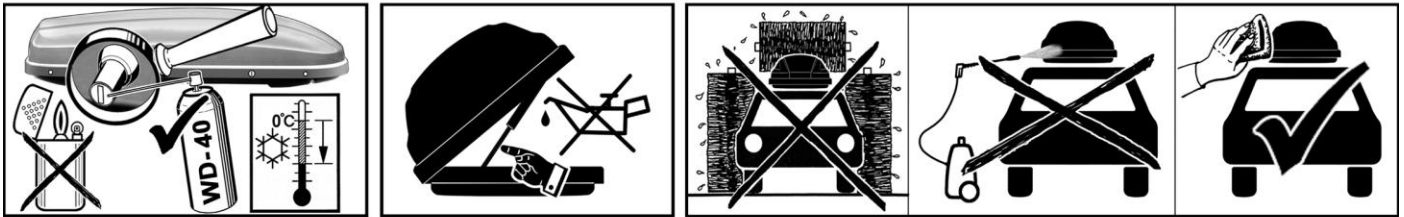
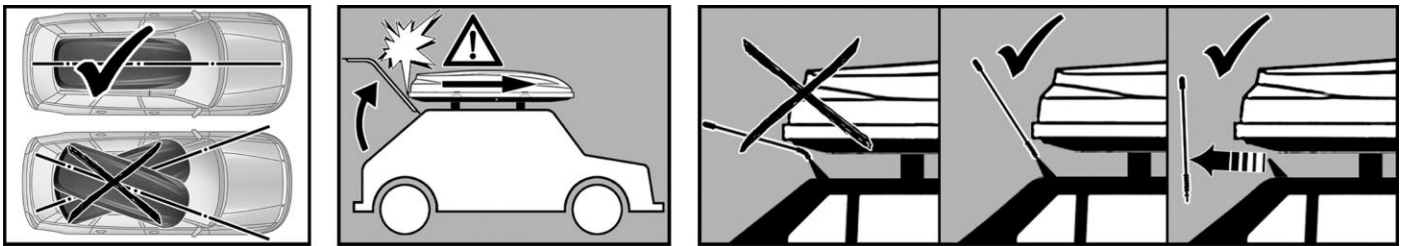
Instructions for use

Comfort sliding fitting
with push button lock

Instructions d'utilisation

Montage glissé facile
avec la serrure de pression





Ausführung	Haupt-Verkaufsbezeichnung Auch andere Verkaufsbezeichnungen sind genehmigt	Maße			Volumen Schüttgut Liter	Gewichte		
		Länge cm	Breite cm	Höhe cm		Eigengewicht kg	zulässige Tragfähigkeit kg	Maximalgewicht beladen kg
VW 340	Dachbox	190	75	39	340	13	50	63
VW 460	Dachbox	230	75	38	460	19	75	94